

The Hazlemere Herald March 2026



It has been a wonderfully busy and productive half-term, even though it was so short! From February half-term through to Easter, the school has been filled with energy, enthusiasm and, most importantly, happy, engaged children.

We were delighted to welcome so many parents and carers to our **recent consultation meetings**. These were very well attended and provided a valuable opportunity to celebrate pupils' achievements and discuss their continued progress. **Thank you for your ongoing support and partnership.**

Our pupils have enjoyed a range of enriching experiences this term. Our **EYFS children had a fantastic trip to Whipsnade**, sparking curiosity and excitement in their learning, while **Year 2 explored history first-hand during their visit to Windsor Castle**. Year 6 pupils demonstrated great maturity and interest during their science work, including their **heart dissections**, which proved both fascinating and memorable.

World Book Day was another highlight, with children and staff embracing the joy of reading through creative costumes and engaging activities.

We are also pleased to share that, after Easter, we will be welcoming a **new wraparound care provider, Friends at Play**. They offer an excellent provision and, **importantly, will extend care to include 3-year-olds—something we have not been able to offer before.** [More info here on our website.](#)

Thank you to our staff, pupils and families for making this such a positive and successful term. We look forward to another exciting Summer Term ahead.

Mr Daniels

Headteacher



Welcome to
Hazlemere C of E Combined School & Nursery



Dates for your Diary



April 2026

13th April- INSET DAY

14th April- Back to school!

24th April- Year 1 Assembly 9am

May 2026

4th May- BANK HOLIDAY

5th-8th May- Whole School Theme Week

7th May Y1 trip to Bekonscot

11-14th May SATS Week

15th - 17th May Year 6 Residential

18-22nd May Art Week

Friday 22nd May School closes for Half-term

Friends at Play Breakfast and Afterschool Club

Friends at Play will be starting with us on Tuesday 14th April. Many of you will know them from sending your children to their holiday clubs and may also know of their strong reputation in other local schools such as Widmer End and Little Kingshill. We are excited to see the enhanced wraparound provision they will bring, especially for 3-year olds which is in high demand from new and potential families to our area.

[Please see our school website for more information](#)



Dear Parents and Carers Welcome to Friends at Play!

Friends at Play is a well-established Breakfast, After school and Holiday club that has been providing wrap around care to children from ages 3-11 for the past 13 years.

In the time that I have been running Friends at Play I have transitioned from a young woman with a background of working in schools and nurseries, to a business owner and a proud mum of two children. I know first-hand how important it is to have the reassurance that your children are safe, happy and being cared for.

Whilst your children are in our care our main goal is to create a safe inclusive environment that allows them to express themselves freely, through play-based learning.

Our club is Ofsted registered; therefore, we take a lot of care and attention in making sure we are working in line with their guidelines. As part of providing care for Early Years children, we work closely with the EYFS (Early Year Foundation Stage) framework to ensure all our activities are complementary and supportive of your children's development stages, not only EYFS, but also each of the Key Stages, as they transition through their primary school journey of discovery.

Although we feel structure at the club is important, we also understand that your children have had a very long day at school and are also in need of an environment that allows them to unwind and perhaps let off a little steam too, as a result we are always led by the children and to our utmost to accommodate their differing needs.

I am very much looking forward to this new adventure and working with all your children from April 2026 and onwards, I hope you all share my enthusiasm and look forward to meeting you and your children very soon.

Should you have any queries about the club please do not hesitate to get in touch.

Florrie & The Team

florrie@email.com
07725400974

The Next Big Project!

Toilet Refurb - Please donate to our school fund!

Since becoming Headteacher, I am proud to have secured over £250,000 of investment to date to improve our school environment for all children. Thanks to this, we have already completed a number of significant projects:

- ✓ Early Years Glow-up
- ✓ New Pitched Roof
- ✓ New flooring throughout the school
- ✓ New Playground Equipment

These improvements have made a real difference to the daily experience of our pupils, and I am grateful for the role our school community has played in supporting them.

Our next priority is the refurbishment of the children's toilets. As you will see from the attached photographs, **these facilities are now in need of significant improvement.** We want to ensure that all children have access to clean, modern and comfortable spaces that reflect the high standards we strive for across the school.

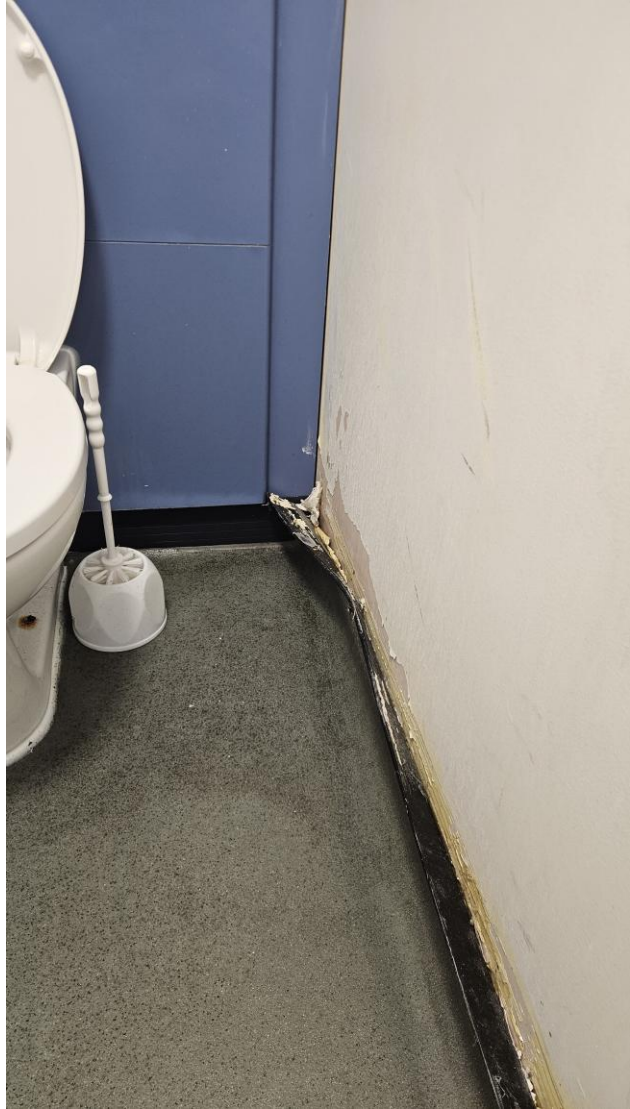
The total **cost of this project is approximately £70,000.** We are very fortunate that the Oxford Diocese will fund 90% of this work. **However, we must raise the remaining 10%.**

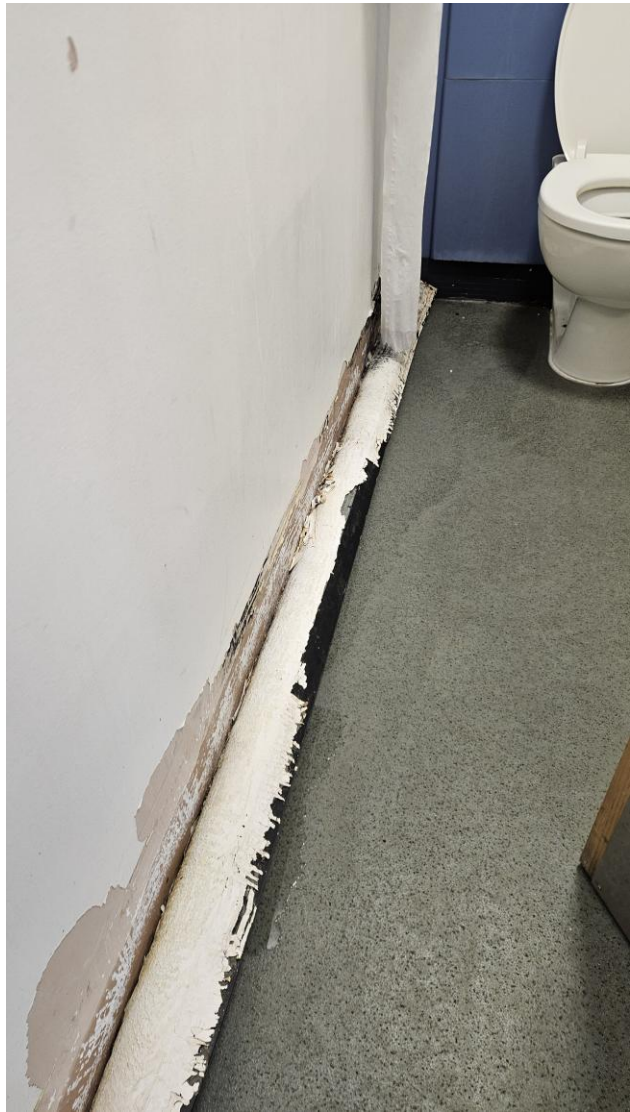
Work will start on KS2 toilets in May Hal-term with the KS1 toilets being refurbished in the summer holidays.

Parental contributions through monthly donations have been instrumental in helping us achieve previous improvements. To make this project possible, we now need to increase the number of families able to contribute, even in small amounts.

If you are able to support us with a regular monthly donation, it would make a significant difference and help us continue to improve our school for all children.

Thank you, as always, for your ongoing support.







Around the school in February & March

Award and Values Badge Winners











EYFS Highlights from February & March































Year 1 highlights









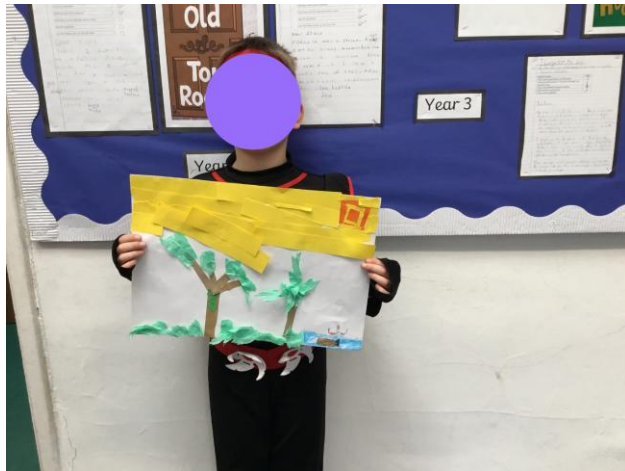


Year 2 highlights

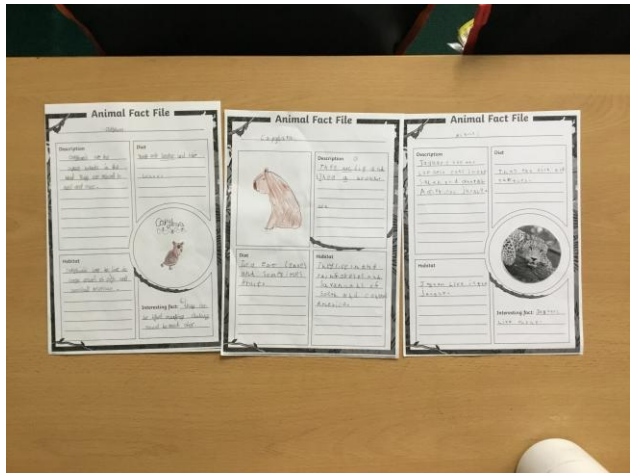
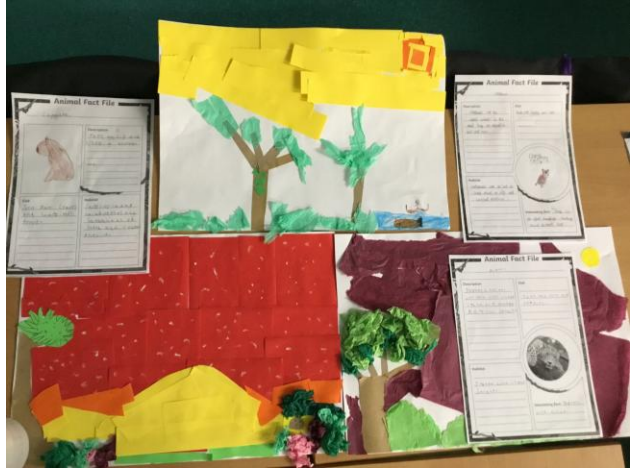












Year 3 highlights























Year 4 highlights


I can offer suggestions for what the texts about the entry into Jerusalem, and the death and resurrection of Jesus might mean.



Today, I have used a palm cross because it is Palm Sunday. Crowds of people placed these so donkeys on the ground and waved palm leaves to welcome Jesus. I felt very proud of my Holy son, but also a bit worried about what could happen to him.



Today, I have used a ~~Jesus crucifix~~ ~~cross~~. The people wanted to crucify Jesus. I felt sorrow and helpless. I was sad beyond words. This day was important because Jesus died for our sins.




Today I have used a wooden cross. My friends saw the empty tomb and met ~~an empty~~ Jesus. I feel overjoyed! It's too good to be true! Hallelujah! Hallelujah!

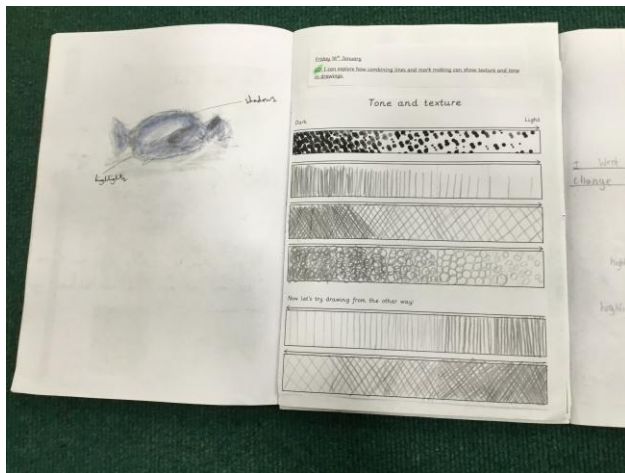
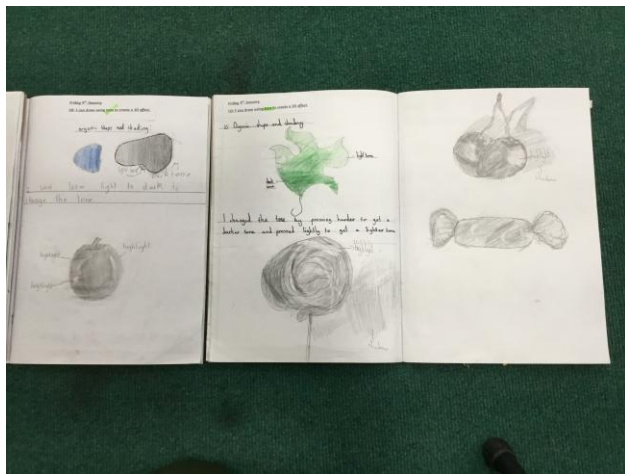
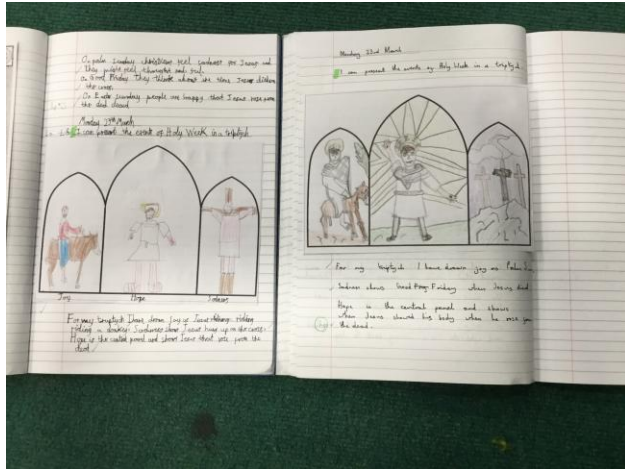
Monday 09th March

LO: I can give examples of what the texts mean to some Christians.

Good Friday



3rd April 2025 Holy Trinity Church service at 10:30am
Come to our church service on AFRIL 03rd 10:30am
Jesus! Amen Amen Amen!







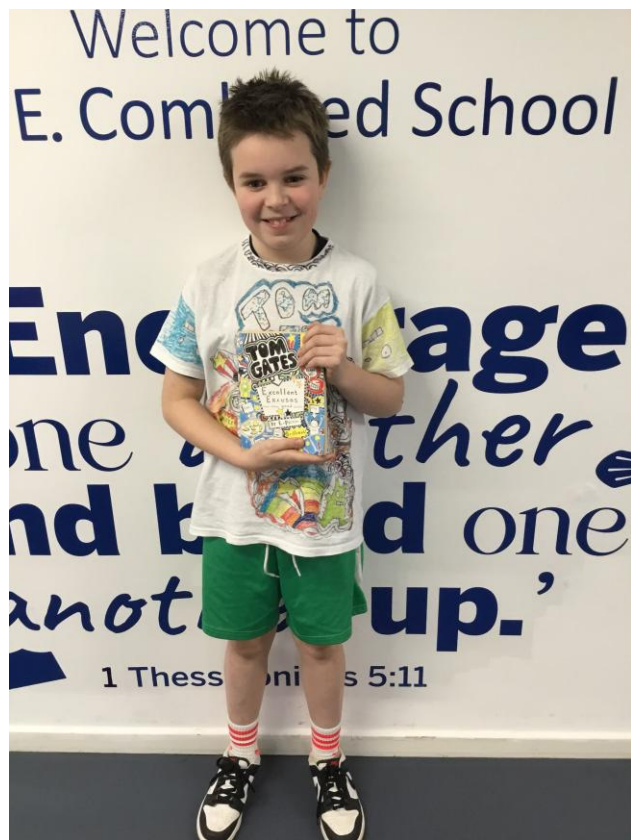








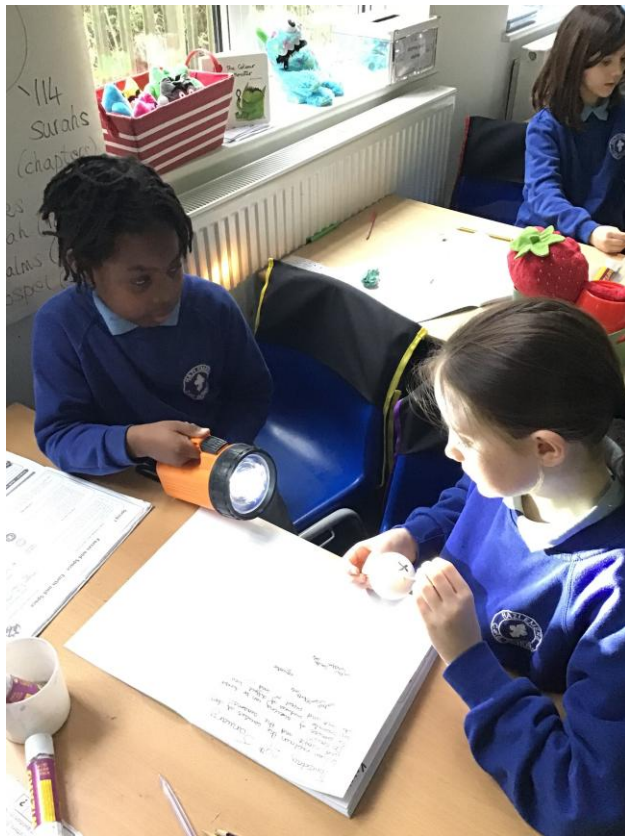






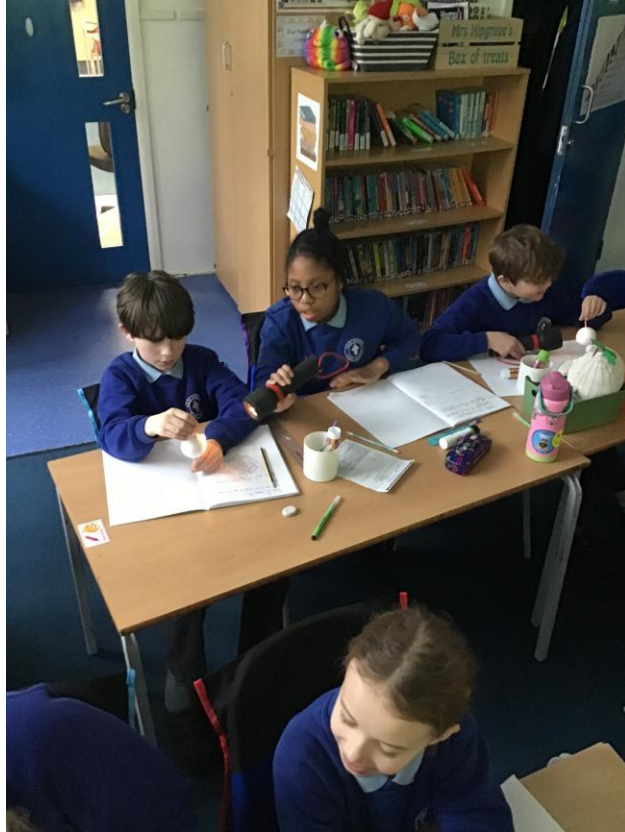
Year 5 highlights















Year 6 highlights



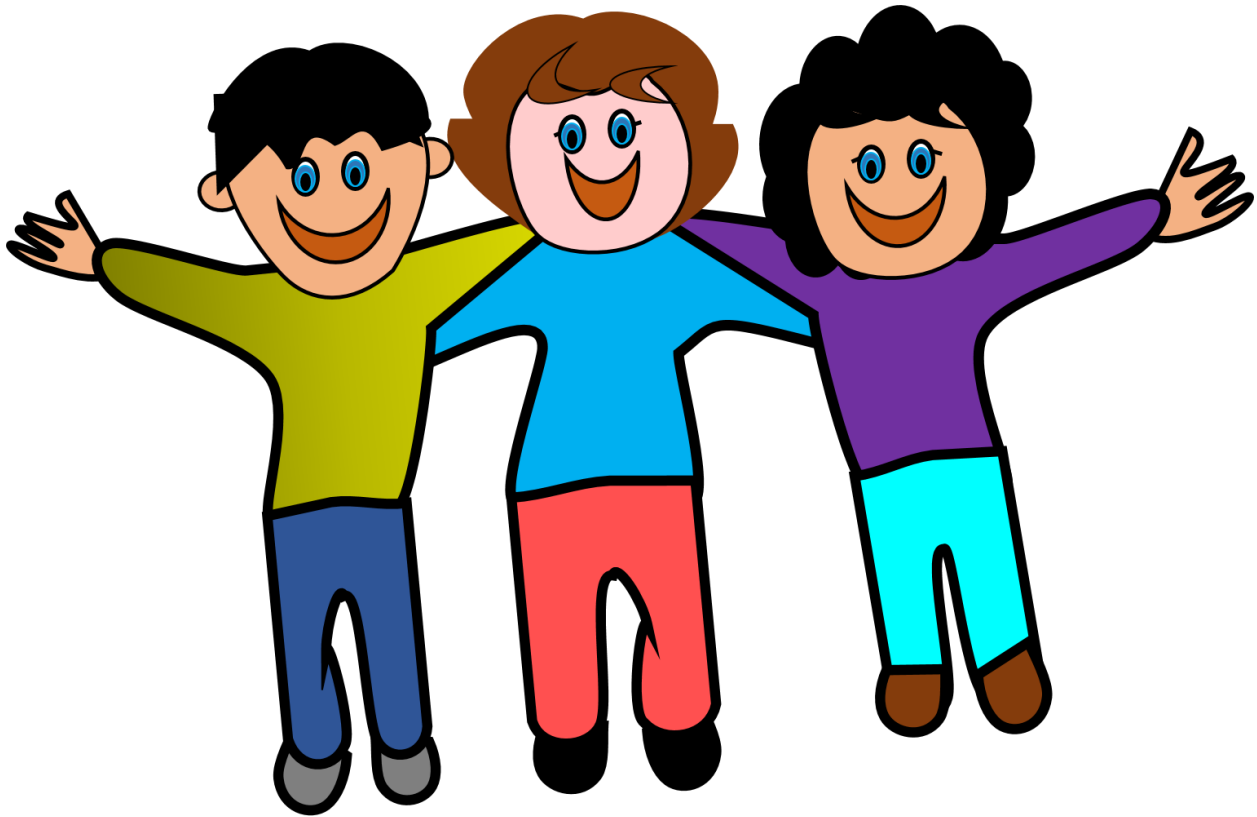








Safeguarding Information - Important Contact Numbers



These services are open 24 hours a day, 7 days a week, including bank holiday weekend.

General & Mental Health Support

Samaritans: Offers confidential emotional support for anyone in distress. Call: 116 123 (free from any phone). Email: jo@samaritans.org (responses may take several days).

- **Shout:** Provides a free, confidential text messaging service for mental health support. Text: "SHOUT" to 85258.
- **Campaign Against Living Miserably (CALM):** Provides listening services, information, and support, particularly aimed at preventing suicide. Call: 0800 58 58 58 (5 pm to midnight, every day). Webchat: Available on the CALM website from 5 pm to midnight.
- **Papyrus (Prevention of Young Suicide):** A national helpline for people under 35 who are struggling with suicidal thoughts. Call: 0800 068 4141 (9 am to midnight, 365 days a year).

Specific Support Services

- **NHS 111:** For urgent medical help or advice (but not life-threatening emergencies). Call: 111 (England and Wales, 24/7). For urgent mental health support via phone, you may be able to select a specific option (e.g., option 2 in some areas).
- **Childline:** Offers a confidential counselling service for anyone under 19. Call: 0800 1111 (anytime).
- **The Silver Line:** A free, confidential helpline offering friendship and conversation for older people. Call: 0800 4 70 80 90 (24/7).
- **National Domestic Abuse Helpline:** Confidential support for those experiencing domestic abuse. Call: 0808 2000 247 (24/7).
- **National Debtline:** Provides free debt advice. Call: 0808 808 4000 (check the National Debtline website for specific Christmas hours).



Hosted by Aylesbury & Wycombe Women's Aid

Bucks Domestic Abuse Services

BDAS offers an intersectional, trauma informed service for people experiencing domestic abuse in Buckinghamshire.

**Free and confidential
24-hour helpline**

📞 01296 437777

🌐 www.bucksdaservices.co.uk

✉ enquiries@bucksdaservices.co.uk

If you are in immediate danger, please call 999

This service has been commissioned by Buckinghamshire Council Community Safety Team

women's aid
BUCKINGHAMSHIRE
National Domestic Abuse Helpline

awa
Aylesbury & Wycombe Women's Aid

Charity No. 299946 Charity No. 1054308

Services and advice

- 

1 Point of Access Helpline (24/7)
01296 437777
- 

2 **Community Based Support and Advocacy**

 - One-to-one emotional and practical support
 - Risk assessing and safety planning
 - Signposting and onward referrals

Aylesbury Vale: 01296 437777
Wycombe, Chiltern & South Bucks: 01494 449922
- 3 **Refuge Accommodation**

Aylesbury Women's Aid: 01296 436827
Wycombe Women's Aid: 01494 461367
- 

4 **Sanctuary Scheme (Home Safety Measures)**

This project received a grant from Buckinghamshire Council's New Burdens Funding Scheme
- 5 **Flexible Fund**

A fund to support survivors in Bucks to achieve or maintain safe and secure housing

 These services are available for anyone 16+ who lives in the Buckinghamshire area



 www.aylesburywomensaid.org.uk
www.wycombewomensaid.org.uk

Support for Young Carers

CarersBucks

Dedicated to supporting carers

We are raising awareness about young carers and the important role schools play in supporting them. A young carer is a child or young person who helps care for a family member with a physical or mental illness, disability, or substance misuse. This may involve carrying out practical tasks, providing emotional support or both. Every caring situation can be different.

National research shows that many young carers are not being identified in schools, meaning many children may be caring without access to vital support. By informing the school about your child's caring role, we can ensure they receive the right support which can result in a significant difference to their wellbeing, education and future opportunities.

If you believe your child/ children has a caring role at home (even if you are unsure) we encourage you to let us know. **You can speak to Mrs Brocklehurst confidentially, and together we can explore what support may be beneficial.**

Please remember that identifying your child as a young carer is not about labelling; but about ensuring they are recognised, understood and given the best chance to belong, achieve and thrive at our school.

For external support; we would also recommend registering any carers within your household with Carers Bucks, the local carers support service. Once a young carer is identified, they may benefit from:

- Peer support groups and activities
- Targeted wellbeing interventions
- One-to-one support sessions
- Advice, information and guidance

You can complete a self-referral via their website [Click here](#) alternatively we understand that this can be daunting and would be happy to do this on your behalf after we have spoken.

Could your child be eligible for a Free School Meal?

Free school meals are available to pupils whose parents receive certain benefits - this could save you hundreds of pounds per year! If you are in receipt of any of the below benefits, please complete this linked form

<https://hazlemereschool.ovw9.juniperwebsites.co.uk/attachments/download.asp?file=120&type=pdf> & return by emailing enquiries@hazlemere-ce.bucks.sch.uk

- Universal Credit with an annual net earned income of no more than £7,400
- Income Support (IS)
- Income-based Job Seeker's Allowance (IBJSA)
- An Income-related employment and support allowance (ESA)
- Child Tax Credit (with no Working Tax Credit) with an annual income of no more than £16,190
- Support under Part VI of the Immigration and Asylum Act 1999
- The guaranteed element of the State Pension Credit

After School Clubs- Summer Term



HAZLEMERE CofE SCHOOL

SUMMER TERM 1 CLUBS

FRIDAY 17TH APRIL - FRIDAY 22ND MAY 2026



GYMNASTICS

A fantastic introduction to gymnastics. We will cover travelling, rolls, balance, take off/flight/landing, flexibility, strength, body management, apparatus, routines and more!

Y1-6 Mondays - 3.20 - 4.20pm

4 sessions - £31 per child

DODGEBALL

This hugely popular club offers kids the chance to play all the exciting variations of dodgeball, ensuring they work up a sweat while having a great time with friends.

Y1-6 - Friday - 3.20 - 4.20pm

6 sessions - £46.50 per child



BOOK NOW
Visit www.completesports.co.uk
or scan the QR code



Contact us
admin@completesports.co.uk

1 - Complete Sports- Monday & Friday's



The Creation Station High Wycombe North
19 Doolittle Avenue
High Wycombe
Bucks
HP11 1BD

07885 492952

lisaandrews@thecreationstation.co.uk

[Create Club at Hazlemere Church of England School - Summer Term 2026](#)

Dear Parents and Carers,

The Creation Station is delighted to announce that we are continuing to offer our award-winning Create Club at Hazlemere Church of England School in the Summer term 2026!

Create Club gives your child lots of creative fun and a fantastic way to enjoy arts and crafts. Your child will be able to get creative, make awesome artworks and build wonderful friendships. There is a wide selection of fun art and crafts activities each week to inspire your child and help their creativity flow! Activities include painting, drawing, sculpture, team building, creative challenges, sketching, model making, collage, printing and more. Each session is filled with different activities so your child will develop lots of new skills and techniques. Come and join the UK's most recommended children's activity provider for lots and lots of fun!

- 👉 Everything provided 🍷 We provide all the safe-to-use tools, materials and overalls.
- 👉 Booking 🍷 Please supply any allergies, medical conditions, or special information.

We have split the booking so that you can book each half term separately. You can still book both half terms should you wish to, to confirm your place up to the end of term.

1st half term – Wednesdays 15th Apr to 20th May 2026 inclusive, 3.20pm to 4.20pm - £9.50 per session – 6 sessions
2nd half term - Wednesdays 3rd June to 8th Jul 2026 inclusive, 3.20pm to 4.20pm - £9.50 per session – 6 sessions

To book click <https://www.thecreationstation.co.uk/finder?location=hazlemere>

Select venue on the left – Hazlemere Church of England School

Please note these clubs do get booked up quickly so we recommend you book in as soon as possible.

"My daughter has a fab time at Creation Station, will be booking again!" Samantha, Holmer Green.

"We are delighted to have the Creation station create club at Badgemore Primary School. The club is so popular and the children love the variety of activities on offer each week. Lisa is professional and has a great relationship with the children." Mr Hoskins, Head Teacher, Henley.
(Source: Trustist)

Please get in touch anytime if you have any questions. We can't wait to welcome you for lots of creative fun!

Lisa

Lisa Andrews

The Creation Station High Wycombe North

Workshops, after school/breakfast/lunchtime clubs, arty parties, holiday clubs, baby groups and much more!

Follow me at

Facebook: www.facebook.com/CreationStationHighWycombe

Instagram: [@creationstationhighwycomben](https://www.instagram.com/creationstationhighwycomben)

Tiktok: [@creationstationwycombe](https://www.tiktok.com/@creationstationwycombe)

for news, free resources and lots more!

2 - Creation Station- Tuesday's



AFTER SCHOOL SCIENCE CLUB

HERE AT
YOUR
SCHOOL

The Club

Mad Science Afterschool Clubs provide the perfect mix of fun, interactive, educational content. Taking aspects of physics, chemistry and some biology to engage and excite all children enrolled. Our hands-on, enquiry based sessions encourage independent learning skills and discovery at their pace. They'll be immersed in a fully unique and different topic each week during the course, so there's plenty to explore as they get to grips with key science concepts and fun STEM based explorations.

**They'll have so much fun,
they forget they're learning**

Booking



Scan QR code to access registration.

1. Create your parent account
2. Add your child's details
3. Book Your Course

HAZLEMERE COFE
TUESDAY

28TH April
5TH, 12TH, 19TH May
2ND, 9TH, 16TH, 23RD June
2026

DEADLINE-18th April 2026

Secure your spot, limited spaces available
8 Week Course- £84.00

To book visit- [https://
madsciencsw.ipalbookings.com/](https://madsciencsw.ipalbookings.com/)



1 Hour
from end
of the school day



All Staff
Enhanced DBS
Safeguarding Trained



All Materials
& Consumables
provided

Spark Their Curiosity
REGISTER & BOOK TODAY!

office@madsciencsw.co.uk • 01792 348205 • www.madsciencsw.co.uk



In the community

SPECIAL OFFER FROM MYCLOTHING

Save 15%
THIS WEEK ONLY!
23-29 MARCH

Just use code **SPRING15** at checkout



SHOP NOW AT
www.myclothing.com



*Offer excludes bundles, clearance & leavers hoodies



AquaMarie

"The best swimming teacher
in the area"

Our private pool is in
Hazelmere and we offer
lessons 7 days a week

FOR INFORMATION :
Tel:- 07960 687166
email Aqua-Marie@outlook.com

Small Groups
1:1 Lessons
Parent & Baby
Improvers
Adults

We run the Swim England program
up to stage 8

£15
PER LESSON



RESERVE YOUR
SPACE FOR
SUMMER

Musical Maestros

SUMMER CAMP

Play a new instrument every day, learn songs and create musical arts & crafts with your friends!

BEACONSFIELD,
FORTY GREEN COMMUNITY HALL

JULY 27-31

AGES 5-11

REGISTER NOW
starkeystudios.mymusicstaff.com
Email enquire at:
Starkeystudiosmusic@gmail.com

STARKEY STUDIOS



EASTER CAMP



Join us for our play based holiday camp, including arts, craft, baking & play

When: Monday 30th - Thurs 2nd April

Where: Beaconsfield Guide Hall

Time: 9.30-am 3.00pm

Early Bird 9.00am

Suitable for ages 4- 10 yrs.

Cost: £42 - Discounts available

Booking: www.calmittleminds.co.uk



EASTER CRAFT EVENT

Structured Easter craft activities for children who like to be creative!

Activities include designing their own tote bag, sewing & baking.

9 APRIL | 9.30-2.30PM

Suitable for ages 5-11 yrs

**WRIGHTS MEADOW CENTRE
HP111SQ**

£32.50 per child

